

Modifying Swiss Long Underwear for WW1 US reenactor use

First, find yourself a pair of Swiss army surplus long underwear.

There are a number of websites that carry surplus Swiss army gear.

To name a few:

Sportsman's Guide

<http://www.sportsmansguide.com>

Swisslink

<http://www.swisslink.com>

RDD Surplus

<http://www.rddusa.com>



Turn the underwear over to the back side. They'll look something like this.



Remove the rear adjustment ties.



Modifying Swiss Long Underwear for WW1 US reenactor use

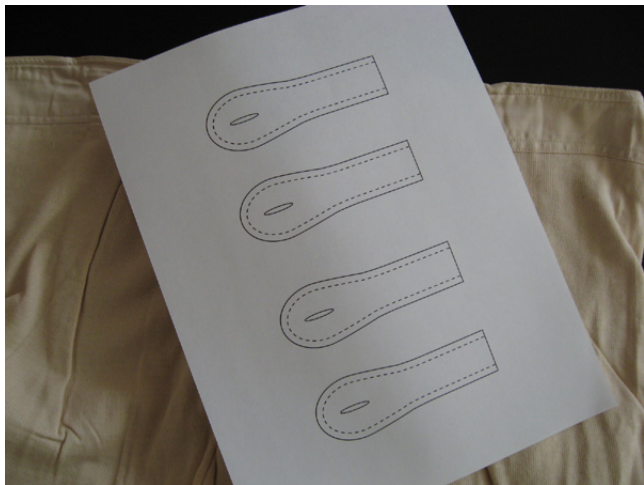
The red marks show where we'll be adding adjustment tabs, a button hole and four adjustment buttons.



We'll need to create two adjustment tabs that we'll attach to the rear of the waist band.

I've provided a pattern for them at the end of this document.

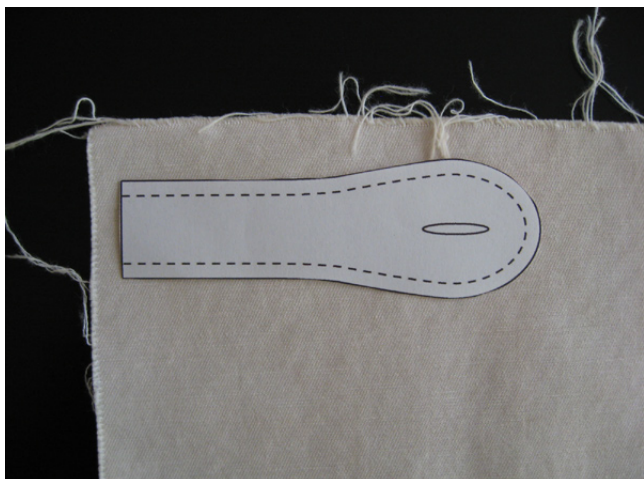
Print out the pattern on regular paper.



You'll also need some off-white/cream colored cotton twill fabric. An 8" square sized piece will do.

Cut out the adjustment tab pattern and place it over the *wrong* side of the fabric.

(The right side of the fabric has diagonal "twill" lines. The wrong side doesn't.)

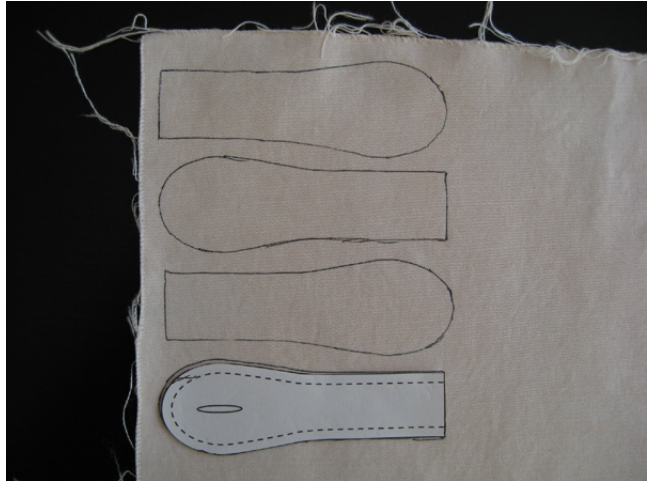


Modifying Swiss Long Underwear for WW1 US reenactor use

Trace the adjustment tab pattern onto the fabric.

Repeat four times.

This will give you four adjustment tab halves.



Cut out all four adjustment tabs halves from the fabric.

Take two tab halves and place them on top of each other.

Do this for the other two halves also.

Make sure the *wrong* side of the fabric is on the *outside* of both tab pieces.

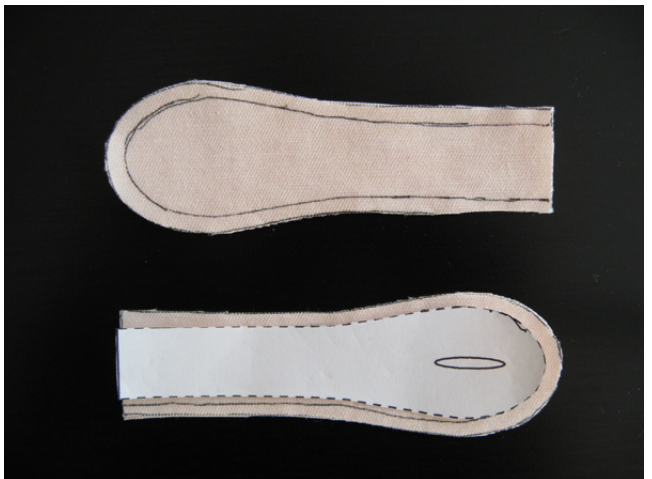


Following the dotted-line curve of the paper pattern, trace the outline onto the top of each of your tab halves sets.

This will give you a sewing guideline.

Only sew on the line. Keep the short end of the tabs open.

Don't sew the tabs closed.



Modifying Swiss Long Underwear for WW1 US reenactor use

After sewing the tab halves together, you'll need to turn them inside out.

You can use a pencil to help push the wider end through.



After you've turned the tabs right side out, use a warm iron to flatten them.



Once flat, sew the tabs again following about 1/8" inside the outer curve of the tabs.

Don't sew the ends shut.

Add a button hole in the wider part of each tab.



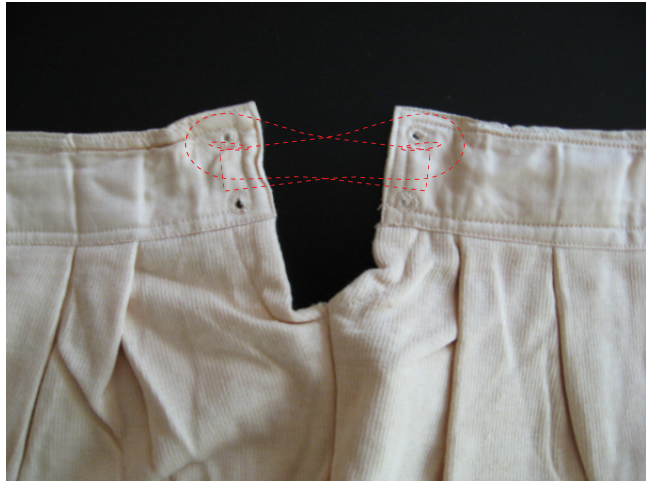
Modifying Swiss Long Underwear for WW1 US reenactor use

The tabs will attach parallel to the rear waist band.

First open up the end seam of the waist band.

Slide the narrow, open end of the tab about 1/4" into the open seam.

Re-sew the waist band end shut.



The tab attachment should look like this.



The red circles show where four adjustment buttons should be attached.

The red line shows where a button hole should be sewn. The hole will allow one of the tabs to pass through.



Modifying Swiss Long Underwear for WW1 US reenactor use

When you're done, they'll look something like this.



Here's what the rear adjustment tabs look like on an original pair.
(Thanks to Vincent Parry)



Adjustment Tab Fabric Pattern

Print out at 100% size.
Do not print at “Fit to Page” setting.

